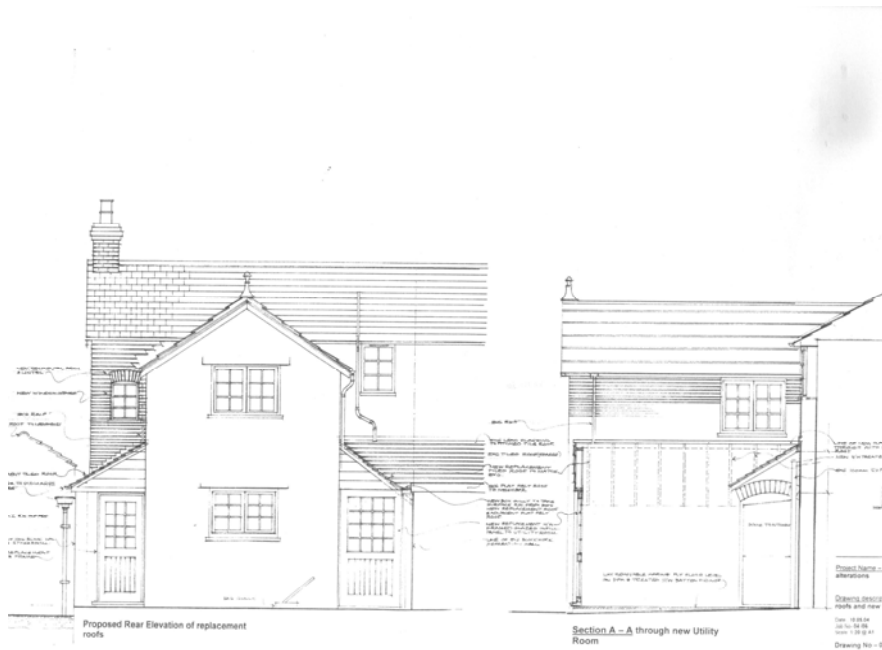


Dorset Cottage Conversion May 2004

Space Design France – Tele: +44 [0]20 7252 0808, www.spacedesignfrance.co.uk



Proposed Rear Elevation

Case Study

The client required an initial building investigation to establish the feasibility of demolishing existing side extensions and the replacement with new structure to provide improved utility and storage space, with possibility for future extension of a new conservatory. The Victorian cottage, which is located in a conservation area, needed a sympathetic architectural treatment to retain its rural charm. The client in consultation with local planners agreed details such as red brick segmental arched windows to maintain historic continuity. Matching local materials were specified to blend in with the mixture of Victorian and earlier surrounding buildings.

Existing rear elevation

